

# CT-CovertConfigurationKit

Configuration kit for individual setup of In-Ear hearing systems for covert communication

Installation and operation

Example



---

English

---

---

## Contents

1	CeoTronics Operating, Warning, and Safety Instructions.....	2
2	General.....	6
3	Scope of delivery.....	6
4	Installation of the software (Standard).....	8
4.1	System requirements.....	8
4.2	Installation.....	8
5	Configuration of the In-ear hearing system using “CT-CovertControlCenter”.....	8
5.1	Menu “File”.....	10
5.2	Menu „Edit“.....	10
5.3	Finish configuration.....	11
6	Maintenance.....	11
6.1	Visual inspections.....	11
6.2	Cleaning.....	11

## 1 CeoTronics Operating, Warning, and Safety Instructions



**For the use of the device and for prevention of personal injury or property damage, notice the national safety and accident prevention regulations and the following warning and safety instructions in this document.**

- Before using CeoTronics products, read completely the appropriate operating instructions. If in doubt, ask our technical staff.
- Keep this document for later use.
- Use CeoTronics products only without damage and abrasion.
- If repair work of any kind needs to be done to CeoTronics products, arrange for it to be performed only by the company CeoTronics or by a specialized workshop that is authorized by CeoTronics. In all other cases, our warranty and liability for the product shall lapse.
- Keep CeoTronics products out of the reach of children and any other persons who are not familiar with the handling and operation thereof.
- CeoTronics products may only be used for the specific application envisaged.
- Safe operation requires clean devices. Ensure that the devices (microphones, connectors etc.) are clean and in good condition at all times.
- Should equipment, supplied by CeoTronics, be definitely put out of service you may return it to CeoTronics. We ensure recycling and / or disposal of outdated equipment in compliance with the applicable environment protection law.



### Product damage!

- Do not immerse a CeoTronics product into water, unless expressly specified for this purpose.
- Connect CeoTronics accessories to a device or disconnect them from a device only after switching the device off, unless otherwise described in the operating instructions.
- Let devices that are designed for outdoor use during use outdoors always closed (e.g. CT-DECT Case) and close unused ports with appropriate cover – if available.
- Do not store CeoTronics products in the open air or in damp ambient conditions. At all times keep them clean, dry and at normal air humidity. CeoTronics products must not be stored in areas with a temperature of over +80° C (+176° F), e.g. in the summertime on the parcel shelf of a car. If not stated otherwise, the following temperature ranges are acceptable for CeoTronics products: -10 to +55° C for operation, -40 to +80° C (-40 to +176° F) for storage.
- Pay attention that no humidity could penetrate into the device during cleaning. Do not use solvents (e.g. benzene, alcohol, etc.) for cleaning! Safe operation requires clean devices.

---

*Ensure that the devices (microphones, connectors etc.) are clean and in good condition at all times.*

**Risk of injury by connection leads!**

- *When using CeoTronics products that are equipped with connection leads ensure that the leads do not get caught up in operational machinery or wheels!*

**Risk of injury by speaker volume!**

- *Please, note that in some audio devices (e.g. radios) very loud signaling beeps could be present as the radio is switched on. There are various types of devices generating a series of tones in different loudness levels. It may be necessary to adjust the volumes of the tones separately. These tones could damage your hearing if they are set too high. Therefore, adjust signaling beeps to a convenient level as desired before starting to use CeoTronics accessories. Follow the instructions of the audio device manufacturer's operating manual to adjust the signaling beeps.*
- *For safety reasons reception volumes in excess of 85 dB (A) are possible with a whole series of CeoTronics products. However, these can be regulated by the user. After switching on the communication system, set the reception volume to approx. 1/2 the available loudness volume and then test the speaker volume, e.g. by opening the squelch on the radio set.*
- *Do not set the volume any higher than is necessary. A very high volume setting can lead to damaged hearing, particularly if it is continuous. For high volumes or noise levels, wear additional earplugs. If in doubt, ask your safety officer or company doctor.*

**Road traffic hazard!**

- *Do not leave CeoTronics products lying around loose in cars, e.g. on the parcel shelf. Stow these products in a suitable, safe place in the car so that they do not present a danger to you or to other occupants of the car, if emergency braking is effected.*
- *When driving a car, do not use the radio because it may distract you from the other traffic. Never use a CeoTronics product (headset, insert earphone, induction receiver etc.) that will impair your hearing.*

**Impairment of flight operation!**

- *When on board an airplane always keep a transmitter/receiver switched off. Operation of the transmitter / receiver could affect the safety of the aircraft, and it is therefore prohibited. Never operate electronic devices on board an airplane without the express approval of an authorized member of the cabin crew.*
- *The CT-DECT GateCom Compact must always be removed once the intercom communication is completed. Never remove the warning flag „Remove before flight“ from the CT-DECT GateCom Compact.*

**Impairment of radio transmission!**

- *Transmit only when it is necessary. Unnecessarily occupying a channel can prevent the transmission of vitally important information.*

**Risk of explosion!**

- *CeoTronics products that are not intrinsically safe (explosion-proof) and therefore have no special explosion-proof designation must never be operated in potentially explosive environments (e.g. when refueling cars, aircraft etc.). Devices that are not explosion-proof can unintentionally trigger off explosions in such areas!*

**Risk of electric shock!**

- *Before opening line voltage operated products (e.g. for service purposes), always disconnect first the mains plug from the mains socket!*
- *Use CeoTronics products only in undamaged condition. In case of any kind of damage, refrain from further using the CeoTronics product and have it repaired.*

**Adverse effect on cardiac pacemakers!**

- 
- *If you are a cardiac pacemaker carrier, before operating a transmitter / receiver ask the manufacturer of your cardiac pacemaker for information about any impairment that could be caused due to high frequencies.*

### **Rechargeable batteries and batteries!**

- *Observe the environmental regulations when handling storage batteries! Do not throw used (defective) storage batteries into the domestic refuse. Observe the battery ordinance (BattV).*



### **Risk of injury by Rechargeable batteries and batteries!**

- *Insert the rechargeable batteries only after having read and understood all safety instructions. Rechargeable batteries imply potential risks, which could cause physical injury and material damage.*
- *Never intend to open a rechargeable battery and never throw it into open fire. Ensure that contacts and charging sockets of the rechargeable battery do not cause short circuit (risk of fire and injury) by bridging (bent-open paper clip, bunch of keys or similar). In such a case, the guarantee is void.*
- *Transport spare rechargeable batteries in electrically non-conductive packing material in order to avoid shorting the rechargeable batteries.*
- *Keep the rechargeable batteries away from persons who are not familiar with their handling and use (e.g. children).*
- *Charging rechargeable batteries in potentially explosive areas is strictly prohibited (risk of explosion!). Charge and change rechargeable batteries only in areas where no explosive gases, vapours, or dusts could be present in combination with air.*

### **Damage to charger or rechargeable batteries!**

- *Charge rechargeable batteries only using the corresponding appropriate CeoTronics charger. Regard voltage and current data, also on the mains side (e.g. 230 V AC or 115 V AC).*
- *Never use the battery charger for charging non-rechargeable batteries.*
- *Chargers are neither waterproof nor dust-tight and need protection against water, rain, and contamination. Use them only in the appropriate environment, intended for the system. Don't cover the ventilation openings.*
- *Don't charge rechargeable batteries outdoors.*

### **Radio Software – Risk of malfunction!**

*Please note that the function of radio accessories is depending on the software settings set up in your radio. Be careful with software updates and / or changes to the software settings. If you update the radio's software, or if you change the software settings, check first on a radio that the radio accessory is still functioning properly after these changes. It is possible that the receiving volume of some radios is not satisfactory. In these cases, we suggest you check if an increase of the receiving volume is possible via the parameters in the audio profile of your radio.*

*Follow the information of the radio manufacturer!*

*If you have any further questions in regards to this subject, do not hesitate to contact our sales back office.*

### **Important safety information concerning the use of CT-DECT digital radio systems!**

- *Legal note for operation in the European Union*

*The transmitter of the CT-DECT device should be used in the European Union only when it is marked as following:*



---

- *Legal note for operation in the USA*

*The transmitter of the CT-DECT device should be used in the USA only when it is marked as following:*



- *Legal note for operation in Canada*

*The transmitter of the CT-DECT device should be used in Canada only when it is marked as following:*



**Improper use!**

*The use of CeoTronics products for special applications, such as explosive and hazardous areas, aviation, bomb disposal (EOD / IEED) or other similar applications, is in the sole responsibility of the end user. The end user has to check and decide that the products can be used without risk.*

*CeoTronics does not take over responsibility for any damage or material losses nor injuries to persons, caused by the use described above or by any other abnormal use of the products.*

## 2 General

The CT-CovertConfigurationKit provides software and hardware for an individual adjustment of CeoTronics In-Ear hearing systems that are designed for covert communication. The kit makes it possible to fine-tune radio volume and the transparency of ambient sounds. Up to three different operation modes can be configured and saved into a profile. The profile can be assigned to a user and ear piece. A database with the CT-CovertConfigurationKit manages the different profiles and the user's preferences.

The CT-CovertConfigurationKit is a service tool for qualified technicians. It is intended for CeoTronics technical personnel, authorized service partners and qualified customer.

The following two versions are available:

<b>Standard</b>	on site PC/Notebook with administrator privileges required (software installation necessary)
<b>Full set</b>	bundled PC with preinstalled software – stand alone system
<b>“CT-Covert System-Set”</b>	

### Notice

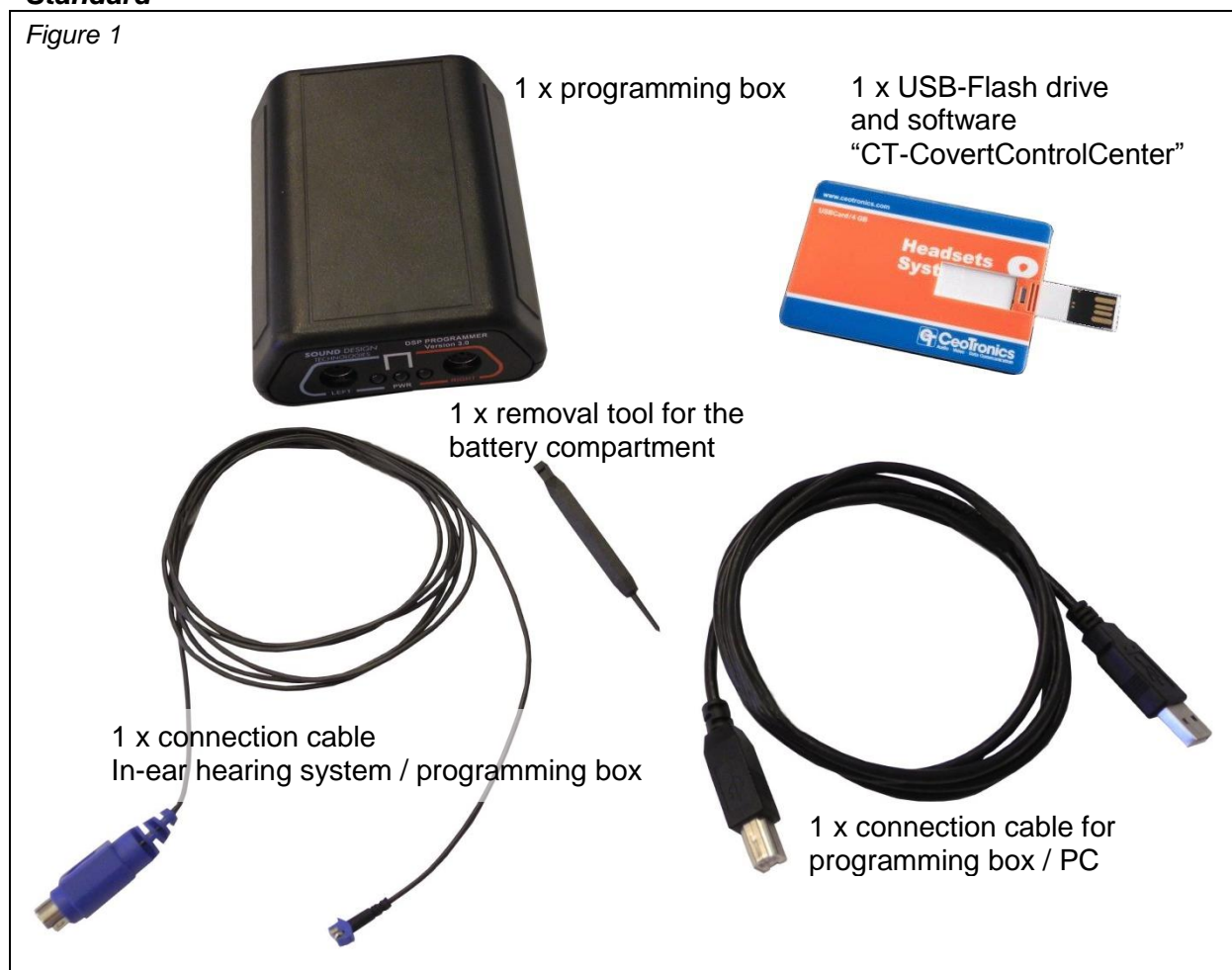
### Product damage!

*The permissible temperature range of operation is -20 to +60°C.*

## 3 Scope of delivery

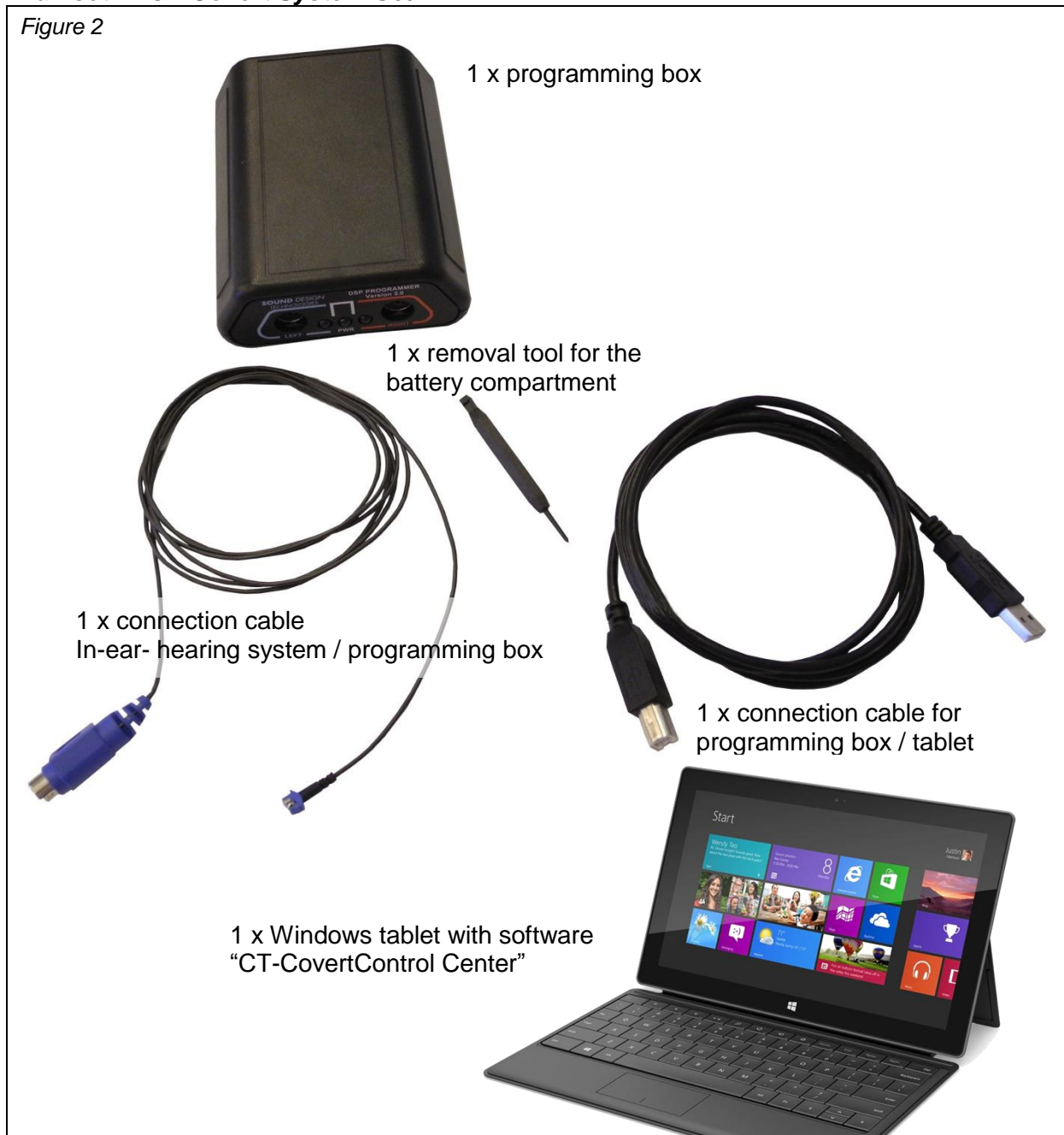
### Standard

Figure 1



## Full set – “CT-Covert System-Set”

Figure 2



## 4 Receipt of goods – Preparing for Use

### INFO

Inspect the goods immediately upon receipt for completeness and possible transport damages!  
Notify transport damages immediately to the forwarder and CeoTronics AG!

### ⚠ DANGER

#### **Danger of ingestion and choking!**

Packaging materials, e.g. filling materials and plastic bags are not toys and have to be kept out of reach of children. There is a risk of children ingesting them and choking!

Dispose packaging material in an environmentally responsible way!

## 5 Installation of the software (Standard)

The installation of the software is necessary when the standard version of the kit is used (cf. Figure 1).

In the version “*Full set*” the software is already installed on the system’s tablet and the system is ready for operation.

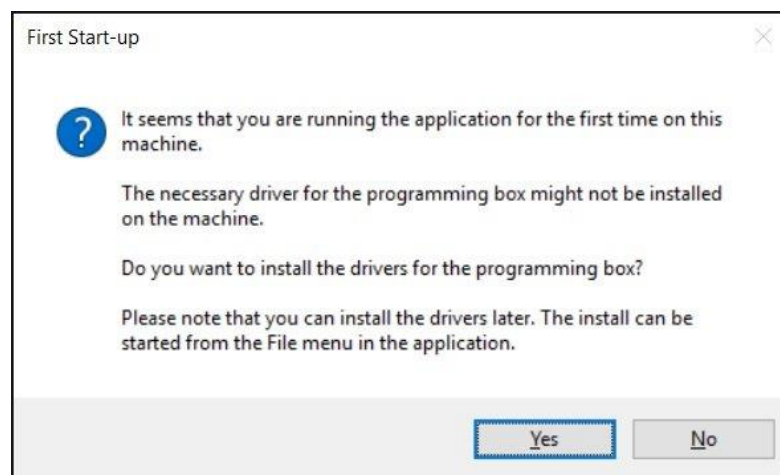
### 5.1 System requirements

For proper installation and operation of the software „CT-CovertControlCenter” on a custom PC the following requirements apply:

- PC / Notebook with USB interface
- Windows 7 or higher (64-bit Version)
- Administrator rights for the installation

### 5.2 Installation

1. Copy the folder “CT-CovertControlCenter” from the supplied USB stick to an appropriate folder on your PC. A common folder and good practice is to place the folder on the desktop.
2. Start the program “CT-CovertControlCenter.exe” which can be found in the folder.



3. Confirm with “Yes”
4. The program will install all necessary drivers and start.

## 6 Configuration of the In-ear hearing system using “CT-CovertControlCenter”

To start with the configuration, the earpiece has to be connected to the programming box which has to be connected to the PC. Follow the steps below to establish the connections.

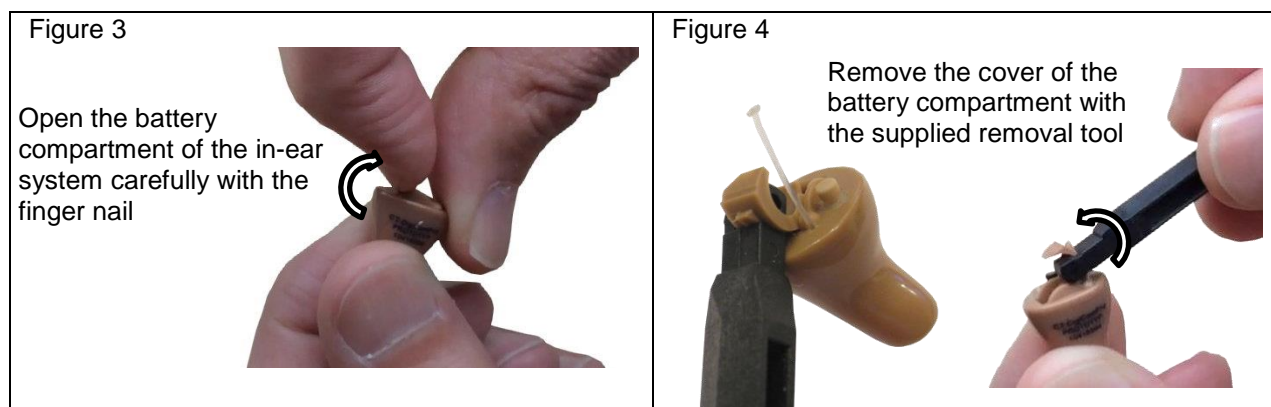




Figure 5

Place the connection cable in the system gently. Check for proper orientation and alignment.

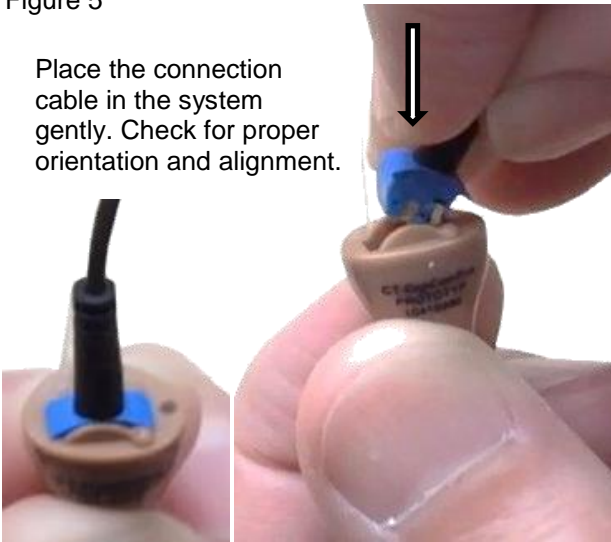
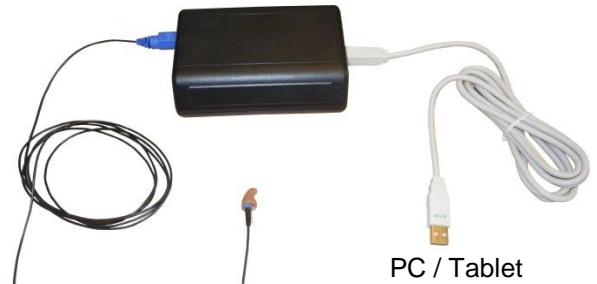


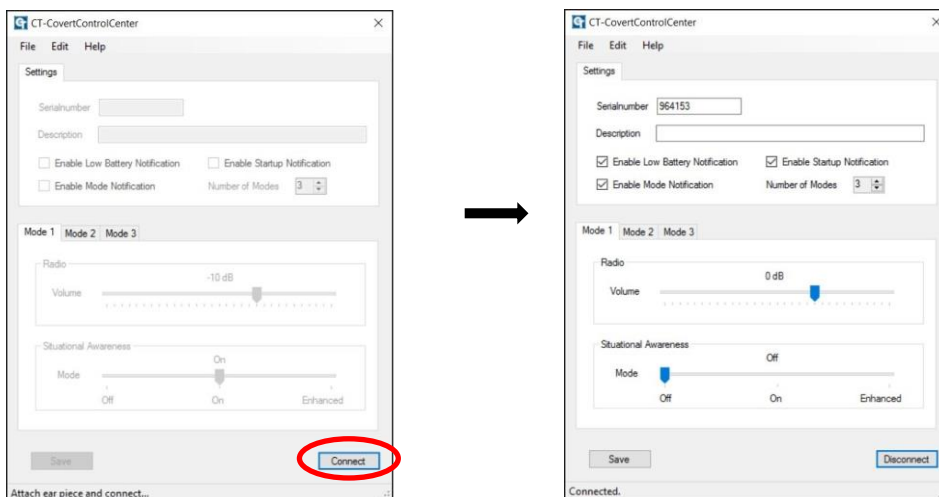
Figure 6



Connect the in-ear system to the programming box and the programming box via the USB-cable to the PC/tablet

After a successful connection to the PC/tablet, the middle LED (PWR) of the programming box turns green and a brief start melody is audible in the in-ear hearing system.

Start the program „CT-CovertControlCenter.exe” and click “Connect”. During the connection progress the left LED of the programming box is flashing green.



On the main page of the application „CT-CovertControlCenter“ the parameters of an individual hearing system are shown and can be controlled.

- Serial number:** - Serial number of the system (not changeable)
- Description:** - Set a new description (e.g. name of the user)
- Low battery signaling:** - Yes/No (Yes – 3 deep tones every 5 min – remaining time 1h)
- Operational readiness signaling:** - Yes/No (Yes – ascending sequence of 3 tones)
- Mode change signaling:** - Yes/No (Yes – 1 signal tone for mode 1  
2 signal tone for mode 2  
3 signal tone for mode 3)
- Number of modes:** - selectable are 1-3 modes

For each mode you can make the following adjustments:

- Volume of the radio:** - OFF / from -19 dB to +10 dB
- Situational Awareness:** - OFF / ON / amplified

Click "Save" after all settings have been made. Signal tones indicate when the settings have been applied to the device. The number of tones indicates the currently active mode on the device.

## 6.1 Menu "File"

The workflow for the 'File' menu is as follows:

- Load Settings From Database... (Ctrl+L):** This action opens a window titled 'Open previous settings from database'. It displays a table of stored settings:
 

Serial	Name	Date
956484	Bjoern's ear piece	12/10/2015 12:55 PM

 A red annotation indicates this is the 'choice of the desired configuration'.
- Import Settings From File...:** This action opens a Notepad window showing the XML content of the selected profile:
 

```

      Serial Name NumberOfModes Mode1 Mode2 Mode3
      956484 Bjoern's ear piece 1 1 0 0 0
      
```

 A red annotation states: 'Display of the database as text file - not changeable'.
- Open:** This action opens a file explorer window showing the 'Presets' folder. A red annotation says: 'Select profile - XML file - navigate to the appropriate folder'.
- Save As:** This action opens a 'Save As' dialog in the 'Presets' folder. A red annotation says: 'Select profile - XML file - select the right place for storage / enter the name of file'.

Additional notes from the screenshots:

- Usually the drivers have already been installed on the system with the first start of the program.
- The 'File' menu options include: Load Settings From Database... (Ctrl+L), Show Saved Settings In Database, Import Settings From File..., Export Settings To File... (Ctrl+S), Install Drivers..., and Quit (Alt+F4).

## 6.2 Menu „Edit“

The 'Edit' menu workflow is as follows:

- Edit Menu Options:**
  - Copy Settings To Clipboard
  - Reset Settings To Factory Defaults (Ctrl+R)
  - Clear Database Of Saved Settings
  - Enable Advanced Mode Control
- Settings Panel:**
  - Serialnumber: 964153
  - Description: [Empty field]
  - Enable Low Battery Notification:
  - Enable Startup Notification:
  - Enable Mode Notification:
  - Number of Modes: 3
  - Mode 1: Radio (Volume: 0 dB), Situational Awareness (Mode: Off)
  - Mode 2: Total Volume (Volume: 0 dB)
  - Mode 3: Radio Gain (Gain: -10 dB), Ambient Microphone (Gain: Off), Signal Processing (Noise Reduction: Medium)

A red annotation 'For trained staff' is overlaid on the settings panel.

---

### **6.3 Finish configuration**

When you are done with the configuration of a single earpiece, save your settings and click “Disconnect” to disconnect the earpiece from the software.

After that, detach the connection cable from the device and attach the cover of battery compartment. Finally, insert the battery in the battery compartment.

After insertion of the battery the system starts with the new settings. An ascending sequence of 3 tones signals operation readiness, unless the sequence was disabled in the general settings panel.

## **7 Maintenance**

### **7.1 Visual inspections**

Regularly examine the system components and in particular the cables and connectors for signs of breakage, cracks and wear.

### **7.2 Cleaning**

Remove any loose dust with a soft brush. Clean the outside with a suitable clean cloth that has been slightly moistened with clear water, and rub the parts dry afterwards. If heavily soiled, some dishwashing liquid can be used in addition.

Clean the contacts of connectors with a commercially available contact cleaner.



**Certificate No. 0110004023 (ISO 9001)**

**Certificate No. 01220004023 (ATEX)**

**Germany and  
International Sales**

**CeoTronics AG**

Adam-Opel-Str. 6  
63322 Rödermark  
Tel. +49 6074 8751-0  
Fax +49 6074 8751-676  
E-Mail sales@ceotronics.com

**USA/Canada/Mexico**

**CeoTronics, Inc.**

512 South Lynnhaven Road, Suite 104  
Virginia Beach, Virginia 23452  
Tel. +1 757 549-6220  
Fax +1 757 549-6240  
E-Mail sales@ceotronicsusa.com

**Spain**

**CeoTronics S.L.**

C/Ciudad de Frias 7 y 9  
Nave 19  
28021 Madrid  
Tel. +34 91 4608250 51  
Fax +34 91 4603193  
E-Mail ventas@ceotronics.es

**Germany and  
International Sales**

**CT-Video GmbH**

Gewerbegebiet Rothenschirmbach 9  
06295 Lutherstadt Eisleben  
Tel. +49 34776 6149-0  
Fax +49 34776 6149-11  
E-Mail ctv.info@ceotronics.com